



PROJECT WILDLIFE
REHABILITATION . EDUCATION . CONSERVATION


Wildlife Workshops

Fall 2011



Continuing Education Opportunities
for Project Wildlife Volunteers and Members


Do you “Like” Project Wildlife?

More than 2,500 people follow our life-saving work on 



“Like” us on Facebook to receive updates on our work, including photos of our wildlife patients!

Got a Smartphone? Like us now!

Scan the QR code using your phone's QR code application to go directly to our Facebook page. Click on the thumbs-up icon on the left hand side  to “Like” Project Wildlife.



You can also join the PW Volunteer Facebook Community!
Search Facebook for Project Wildlife Volunteers

Project Wildlife’s Fall 2011 Workshop Series

Project Wildlife is committed to providing continuing education to aid our volunteers in their efforts as rehabilitators and educators.

In this catalog you will find our Fall 2011 continuing education workshop offerings. If there is a workshop you do not see on the list, or if you have ideas for future workshops, please let us know so that we can attempt to make it available in an upcoming season.

Thank you for your continued support and dedication, and we hope you enjoy our Fall 2011 workshops!

WORKSHOP DISCLAIMER:

- *The information provided in these workshops is an educational service and is intended for educational purposes only. It is not meant to substitute for seeking consultation with a PW staff member or Team Leader or to substitute for the treatment prescribed by a veterinarian for the diagnosis or treatment of a specific patient’s symptoms or medical condition.*
- *Under no circumstances will the development team of this training program or PW be held liable for any decision or action taken due to the information contained within the curricula or for any loss, claim or damage resulting from its use.*
- *PW does not warrant that the information in the represented curriculum is complete, nor are we responsible for omissions or errors in the handouts, as each is prepared by the individual instructor.*
- *Each PW volunteer must complete two hours of Continuing Education each year to be in compliance with the California Department of Fish and Game Memorandum of Understanding with Wildlife Rehabilitators. CE credits may be earned through the workshops offered here or through programs offered outside of PW.*

Workshop Series Guide

Workshop Level	Eligibility Information
100 series:	Open to all PW volunteers and members, as well as those working in the animal industry. <i>Note:</i> age restrictions may apply in some workshops.
200 series:	Open to all new and active PW volunteers.
300 Series:	Open to all active PW volunteers who have completed Level I or higher in-house training programs. PW volunteers who are currently in the process of completing Level I <i>and</i> are highly interested in working in Satellite Care may also enroll in 300-level Satellite Care workshops as indicated in the workshop descriptions.

Please note: Medical workshops may occasionally use deceased animals for hands-on practice of medical skills or treatments.

How to Become Eligible for Workshops

Not a current PW volunteer or member? That's OK, it's easy to apply to become a volunteer or member.

PW Volunteer Application

Applications available online at www.projectwildlife.org or, please contact:

Adrianna Lewis
Director of Volunteers
(858) 866-0555, ext. 207
alewis@projectwildlife.org

PW Membership Status

To check your membership status or to become a member, please contact:

Diane Owens
Development Manager
(858) 866-0555, ext. 201
dowens@projectwildlife.org

Workshops by Date

Workshop	Title	Date	Details
OCTOBER			
203	Bird Anatomy and Dissection	Sat. 10/15	P. 8
101	Animal in Need	Mon. 10/17	P. 6
201	Physical Exams	Sat. 10/22	P. 8
119	Triage Center Pharmacology	Sun. 10/23	P. 6
152	Lions, Tigers and Bears Field Trip	Sat. 10/29	P. 7
260b	Guest Speaker: U.S. Fish and Wildlife on Burrowing Owls	Tues. 10/25	P. 10
NOVEMBER			
231	Mesa College AHT Campus Tour	Tue. 11/1	P. 9
260b	Guest Speaker: Cheetah Conservation Fund	Tue. 11/1	P. 10
341b	Intro to Satellite Care: Rabbits	Sat. 11/5	P. 12
341c	Intro to Satellite Care: Squirrels	Sat. 11/5	P. 12
220	Intro to Microscopy	Sat. 11/12	P. 9
222	Understanding Zoonotic Diseases and Transmission Prevention	Sat. 11/12	P. 9
DECEMBER			
341a	Intro to Satellite Care	Sat. 12/3	P. 12
341d	Intro to Satellite Care: Opossums	Sat. 12/3	P. 12
341f	Intro to Satellite Care: Raptors	Sun. 12/4	P. 12
341e	Intro to Satellite Care: Corvids	Sun. 12/4	P. 12

Level 1 Workshops

101 Animal in Need: When to Intervene & What to Do

This workshop covers how to peacefully coexist with wildlife, practical ways to handle common encounters and what to do when you come across an animal that requires help. Wildlife is an integral component of San Diego's unique ecosystem and therefore it's imperative that we live in harmony with our wild neighbors and act responsibly when we find wild creatures in need.

Pre-requisite: Active volunteer status or current PW membership
Instructor: Alison Cook
Date/Time: Tuesday, 10/17 from 6 to 8 p.m.
Location: Sherman Street Classroom
Fee: Free
Available spots: 15

119 Triage Center Pharmacology

This is your opportunity to learn how to properly medicate a variety of species, including the species most commonly brought in to Project Wildlife. Via hands-on training, you will learn appropriate routes of administration, including oral, ophthalmic and otic. Learn to identify commonly administered medications and use basic medical terminology to follow prescriptions.

Pre-requisite: Active volunteer status or current PW membership
Instructor: Robin Dunbar
Date/Time: Tuesday, 10/23 from 10 a.m. to 12 p.m.
Location: Triage Center
Fee: \$15
Available spots: 10

OpenHouse
By Zip Code

Find an Open House

Search for free, no registration required.
openhousebyzipcode.com

Listings, maps, directions — all in one place!
 Open house ads run Monday thru Sunday... new posts arrive daily!
 Link your open houses with your facebook page.

The one site that answers the question, "Where are the Open Houses today?"

San Diego's Best Place to Shop For Open Houses

152 Lions, Tigers and Bears Field Trip

Join PW for a field trip to Lions Tigers & Bears in Alpine. LTB is a federally and state licensed nonprofit 501(c)(3) rescue facility dedicated to providing a safe haven for unwanted and abused exotic animals. LTB's mission is to rescue abused, neglected and abandoned exotic cats and bears, and provide them with a life-long haven to live out their natural lives with dignity in a safe and caring environment.

Note: Carpooling from the Triage Center will be arranged.

Pre-requisite: Active volunteer status or current PW membership
Lead: Adrianna Lewis
Date/Time: Saturday, 10/29 from 10 a.m. to 12 p.m.
Location: Lions, Tigers and Bears
Fee: \$20
Available spots: 30

2012 San Diego Bird Festival



March 1 - 4, 2012
 Marina Village, Mission Bay Park

Featuring Keynote Speaker: Ken Kaufmann

Mr. Kaufmann is editor of Audubon Magazine and author of *Kingbird Highway*, *Flights Against the Sunset*, and *Lives of North American Birds*.

NWRA Symposium 2012

March 13 - 17, 2012
 Crowne Plaza
 Baton Rouge, Louisiana

The world's most comprehensive symposium for wildlife rehabilitators, educators and veterinarians.

For more information, visit www.nrawildlife.org

Level 2 Workshops

201 Physical Exams

Learn how to handle and restrain animals during a physical exam, what to look for during the exam and how to make a diagnosis. **Note:** This workshop will utilize deceased animals for hands-on practice.

Pre-requisite: Active volunteer status

Instructor: Robin Witkin

Date/Time: Saturday, 10/22 from 10:30 a.m. to 12:30 p.m.

Location: Triage Center

Fee: \$15

Available spots: 10

203 Bird Anatomy and Dissection

What does a bird look like from the inside out? Dissect and identify a variety of birds so that you can better understand how the animal's bodies function. Additionally, you will learn the physical characteristics that identify a bird's gender.

Pre-requisite: Active volunteer status

Instructor: Mary Platter-Rieger and Meryl Faulkner

Date/Time: Saturday, 10/15 from 1 to 3 p.m.

Location: Triage Center

Fee: \$25

Available spots: 8



**HAWKWATCH
2012**

Saturdays in January 2012, 9 a.m. to 12 p.m.

Wildlife Research Institute, Inc.

Ramona Grasslands

For more information visit www.wildlife-research.org

220 Intro to Microscopy

Learn how to use a microscope: adjust settings, focus, locate specimens, stain slides, which solutions to use and even how to utilize the camera to take photos of your slide. During the workshop you will run a fecal and throat swab for a patient and perform a cheek epithelium swab on yourself.

Pre-requisite: Active volunteer status

Instructor: Nicole Gardner

Date/Time: Saturday, 11/12 from 10 a.m. to 1 p.m.

Location: Sherman Street Classroom

Fee: \$15

Available spots: 6

222 Understanding Zoonotic Diseases & Transmission Prevention

This workshop discusses the most common zoonotic diseases found in local wildlife populations. Learn how to minimize risk of self-exposure, recognize symptoms, prevent transmission between animals in our care and utilize proper sanitation techniques. Lecture plus hands-on demonstration.

Pre-requisite: Active volunteer status

Instructor: Nicole Gardner

Date/Time: Saturday, 11/12 from 2 to 4 p.m.

Location: Sherman Street Classroom

Fee: \$15

Available spots: 15

231 Mesa College AHT Campus Tour

This is an opportunity to learn about Mesa College's Animal Health Technology program. The program is tailored to students pursuing careers as Registered Veterinary Technicians and is the only program of its kind in the San Diego area. The school will be open for visitors to tour the facility, meet faculty members and view the wide variety of animals housed on site. Be sure to bring your camera! **Note:** Campus maps will be provided and carpooling from the Triage Center will be arranged.

Pre-requisite: Active volunteer status

Instructor: Trish Jackman

Date/Time: Tuesday, 11/1 from 11:30 a.m. to 1:30 p.m.

Location: San Diego Mesa College

Fee: \$20

Available spots: 15

260a Guest Speaker: US Fish & Wildlife on Burrowing Owls

John Martin, a USFW biologist from the Rancho Jamul Ecological Reserve, will talk about the work they are doing with Burrowing Owls. Though not currently listed as endangered, there are efforts underway to list this shy owl as a species of special interest and Project Wildlife is actively working with the reserve to help re-establish breeding colonies.

- Pre-requisite:** Active volunteer status
- Instructor:** John Martin
- Date/Time:** Tuesday, 10/25 from 6 to 8 p.m.
- Location:** Sherman Street Classroom
- Fee:** \$10
- Available spots:** 15

260b Guest Speaker: Cheetah Conservation Fund

Join us for an evening full of cheetah conservation with Brianne Miller of the Southern California Chapter of the Cheetah Conservation Fund. Brianne will discuss the challenges facing this beautiful cat in Africa. Brianne is a knowledgeable and energetic speaker who has spent time in Namibia and South Africa working to protect this fastest of wild cats.

- Pre-requisite:** Active volunteer status
- Instructor:** Brianne Miller
- Date/Time:** Tuesday, 11/1 from 6 to 8 p.m.
- Location:** Department of Animal Services
- Fee:** \$10
- Available spots:** 15

CCWR Symposium 2011

November 11 - 13, 2011

“Nuggets of Knowledge”

The Resort at Squaw Creek
(near Lake Tahoe, CA)



For details, visit www.ccwr.org



SPECIAL OFFER!

Purchase a subscription and 50% will go to Project Wildlife to continue their important work.

To subscribe visit projectwildlife.org or call San Diego Home/Garden Lifestyles at (858) 571-5882



Level 3 Workshops

341a Intro to Satellite Care

Come find out what it takes to be a member of a Satellite Care team from Trish Jackman, Project Wildlife's Wildlife Rehabilitation Manager. Baby season will be here before we know it and this overview can help you decide if Satellite Care is right for you. To learn more about Satellite Care for a specific species, see the additional species-specific workshops 341b through 341f below. **Note:** All 341 workshops require active volunteer status, are free and held at the Sherman Street Classroom.

Instructor: Trish Jackman

Date/Time: Saturday, 12/3 from 10 a.m. to 12 p.m.

Available spots: 15

341b-f Species-specific Satellite Care Workshops

341b Intro to Satellite Care: Rabbits

Instructor: Cherri Bailey

Date/Time: Saturday, 11/5 from 10 a.m. to 12 p.m.

Available spots: 25

341c Intro to Satellite Care: Squirrels

Instructor: Linda Hunter & Trish Jackman

Date/Time: Saturday, 11/5 from 12:30 to 2:30 p.m.

Available spots: 25

341d Intro to Satellite Care: Opossums

Instructor: Donna Bartlett

Date/Time: Saturday, 12/3 from 12:30 to 2:30 p.m.

Available spots: 25

341e Intro to Satellite Care: Corvids

Instructor: Jeanne Stock

Date/Time: Sunday, 12/4 from 12:30 to 2:30 p.m.

Available spots: 25

341f Intro to Satellite Care: Raptors

Instructor: Carolyn Goben & Trish Jackman

Date/Time: Sunday, 12/4 from 10 a.m. to 12 p.m.

Available spots: 25



Farmers' Market Bag

Our FMB program is a weekly selection of fresh California grown fruits and vegetables for **only \$20**. You decide the weeks you want to order with the option to add-on offerings from local partner businesses including Catalina Offshore (fish), Venissimo (cheese), Sadie Rose Bakery (bread) +many more.

Inquire about **FMB Groups** for delivery to a convenient group location like your office or gym! Find out more: specialtyproduce.com/fmb



Curious? Check out previous bag contents in our FMB videos on the Specialty Produce App!

An easy-to-use database of produce history, nutrition, cultivation, seasonal availability, and recipes.

Available now in the Android Marketplace and on the App Store!

@SpecialtyProd
/specialtyproduce

How to Enroll

Step 1 Determine your workshop choices and enter them into the form on page 17. Make note of the total fees due.

Step 2 Fill out the Enrollment Information and Payment Form on page 16.

Step 3 Bring or send your completed form with payment to one of the following PW locations:

PW Administrative Office
4343 Morena Blvd. #7
San Diego, CA 92117

PW Triage Center
887 1/2 Sherman Street
San Diego, CA 92110

Enrollment, Registration & Payment Information:

- Enrollment is on a first-come, first-served basis and requires payment in full at the time of enrollment in the form of cash, check or credit card. You will receive an enrollment confirmation at the time your payment is processed.
- Membership must be current at the time of the workshop. For membership information, contact Diane Owens at dowens@projectwildlife.org.
- Payments are non-refundable but may be credited to a different workshop if you withdraw at least 10 days prior. If you are placed on a waiting list for a full workshop, your payment may be held up to the date of the workshop and will not be deposited until and unless you have received a confirmed spot in the workshop.
- Unless otherwise noted, registration will close two days prior to the workshop date.
- Space is limited! Workshop size varies based on location and topic. Enroll early to ensure a spot.
- You will receive a reminder, including directions, a few days prior to each workshop for which you are registered.
- Please wear long pants and sneakers to all workshops. Additional equipment will be provided as needed.

Questions? Contact Director of Volunteers Adrianna Lewis at alewis@projectwildlife.org or (858) 866-0555, ext. 207



Got Wildlife?

Wildlife Extraction

Bats in the belfry?
Raccoons in the attic?
Skunks under the house?

- Humane eviction of wildlife
- Repair and prevention measures
- Cleaning or sanitizing of area
- Close up openings
- Follow-up call or inspection
- Habitat and conservation education

More than just wildlife removal...
prevent reoccurrences
the humane way!

619.692.WILD
www.WildlifeExtraction.com

A FEE-BASED SERVICE BENEFITING PROJECT WILDLIFE

Project Wildlife's Veterinary Partners



Quality Veterinary Care for Dogs, Cats, Birds, Rabbits, Ferrets, Reptiles and other Family Pets

At Project Wildlife, we are dedicated to providing the best possible care for our wildlife patients.

The veterinary hospitals and clinics on the following pages provide free and/or low-cost veterinary services to Project Wildlife's patients on a regular basis.

Services Offered:

- Avian & Exotic Medicine and Surgery
- Pre and Post Purchase Exams
- Complete Endoscopic Evaluations
- 'Home Again' Microchip Implanting
- Exotic Pet Care/Nutrition Counseling
- Laser Surgery
- Behavior Consulting
- State of the Art Avian Boarding Facility

(760) 745-8115

655 W. Citracado Parkway (Felicitita/I15)
Escondido, CA 92025

Gary A. Gallerstein, DVM Author of:

- The Complete Pet Bird Owner's Handbook, Third Edition
- First Aid for Birds

Carmine G. Bausone, DVM:

- Acupuncture/Herbal Medicine/Alternative Therapies/VOM

Pat Mulloy, RVT: Avian-Exotic Nursing Supervisor

Hospital Hours: Mon-Fri 7AM – 6 PM + Urgent Care Hours: 6-9 PM
Sat 8 AM – 5PM; Sun 8-5 PM; Please Call for an Appointment

CUYAMACA
ANIMAL HOSPITAL

(619) 448-0707

www.cuyamacaanimalhospital.com

Visit our web site at www.aahc.us



Rancho San Diego Animal Hospital

We have expert knowledge in the Medical and Surgical needs of avian, exotic and companion pets. Our Doctors provide compassionate and professional care for your birds, reptiles, rabbits, rodents, ferrets, dogs and cats.



Rosanne Brown, DVM



Kristi Gaddy, DVM



Janet Loken, DVM



Hours:
Mon. – Fri.
8am – 6pm
Sat.
8am-4pm

Become a Fan on Facebook

Visit our website at www.RSDANIMALHOSPITAL.com

2988 Jamacha Rd. El Cajon, Ca 92019
619-660-6767



MISSION ANIMAL AND BIRD HOSPITAL

“We care about your pet as much as you do”

655 Benet Rd.,
Oceanside, CA
(760) 433-3763
www.MissionAnimal.com

Providing North County the highest quality veterinary care for 30 years.

DOGS * CATS * BIRDS * POCKET PETS
Medicine, Surgery, and Dental Care
Low cost vaccine clinic
Pet Lodge

OPEN 7 DAYS A WEEK
Monday – Friday 7am – 7pm
Saturday 8am – 4pm, Sundays 8am – 4pm

Come see our brand new, 11,000 sq. ft. facility, which also houses the Bark Avenue Resort & Kamp for Pets. Features include luxury boarding suites, Doggy Day Care, a pet salon, professional dog training, and a park-like outdoor play area.

Stop by and ask for the tour!



www.facebook.com/missionanimal



CARE

Animal Hospital

This hospital was established in 1970 to provide quality services for animals in the Temecula Valley and surrounding areas.

We provide quality veterinary care for: dogs, cats, birds, rabbits, ferrets, reptiles and other family pets.

We are here to give exceptional care to the ones you love, to meet your needs, and provide your pets with better health and long life. Our goal is to provide our clients and their pets the highest standard of veterinary care available at a reasonable price.

Joe Alcorn, MS, DVM

Lauren Craft, DVM

29738 Rancho California Road, Suite A, Temecula, CA 92591

951-676-4690

Hospital Hours: Mon, Wed, Thurs & Fri: 8:00am - 6:00pm
Tuesday: 8:00am-7:00pm
Saturday: 8:00am-2:00pm
Sundays & Holidays Closed

In case of an emergency during office hours please call (951) 676-4690

www.careah.com



Brian Loudis, DVM ABVP
Board Certified in Avian Medicine and Surgery

Aaron Lamoree, DVM

Stacy DiRocco, DVM

(760)634-2022

Puppy & Kitten Packages

Specialized Care for Exotic Pets

Geriatric Programs

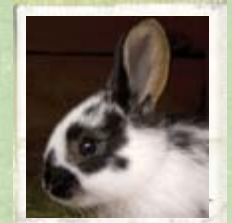
Pain Management

Digital X-ray

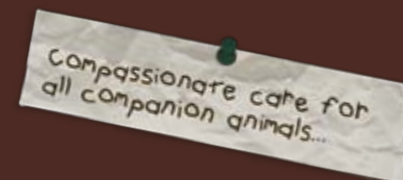
Comprehensive Dental Care

Ultrasound

Advanced Anesthetic Monitoring



Providing advanced medicine and quality care for *all* companion pets



Dogs Cats Birds Rabbits Rats Reptiles Small Mammals

www.allpetsanimalhospital.com

285 N. El Camino Real, Suite 105 • Encinitas, CA 92024

Special Thanks to our Collaborative Partners

Acacia Veterinary Hospital
All Pets Animal Hospital
California Council for Wildlife Rehabilitators
California Department of Fish and Game
California Department of Public Health, Office of
Binational Border Health Early Warning Infectious
Disease Surveillance Program (EWIDS)
Care Animal Hospital
County of San Diego, Department of Animal Services
County Veterinarian, Department of Environmental Health,
Vector Disease & Diagnostic Laboratory
Cuyamaca Animal Hospital
Fund for Animals Wildlife Center
International Wildlife Rehabilitation Council
Lions, Tigers and Bears
Mission Animal and Bird Hospital
National Wildlife Rehabilitation Association
Oiled Wildlife Care Network
PETCO
Pet Emergency and Specialty Center
Rancho San Diego Animal Hospital
San Diego Humane Society and SPCA
San Diego Parks and Recreation
Scripps Research Institute
SDG&E
SeaWorld San Diego
Sony Electronics
Specialty Produce
U.S. Fish and Wildlife Service
Wildlife Assist
Wildlife Research Institute, Inc.

Contact Project Wildlife

Administrative Address

4343 Morena Blvd. #7, San Diego, CA 92117
Phone (858) 866-0555 / Fax (858) 866-0558